

**Spezial Fittings – Special Fittings – Raccords Spéciaux**  
**Übergangsstücke – Adapters – Adaptateurs** max. 2000 bar  
max. 30,000 PSI

Fittings in korrosionsbeständigen Werkstoffen

- Hochdruck-Fittings und Übergangsstücke mit mediuemberührtem Einsatz in korrosionsbeständigen Werkstoffen. Max. Betriebstemperatur: 200°C.
- In der bewährten SITEC-Schrumpfkonstruktion sichert der Einsatz aus dem gewählten Werkstoff die Korrosionsbeständigkeit und der hochfeste Körper in W.Nr. 1.4571 die Druckfestigkeit der Einheit.
- Relativ weiche, aber äusserst korrosionsbeständige Werkstoffe können dank dieser Schrumpfkonstruktion auch bei hohen Drücken eingesetzt werden.
- Werkstoffe der Einsätze:  
Hastelloy C4 – Hastelloy C276 – Hastelloy C22 – Monel – Hastelloy B2 – Titan – Inconel – Nimonic.
- Weitere Werkstoffe auf Anfrage.
- Fittings in korrosionsbeständigen Werkstoffen sind entsprechend den Katalogblättern 720.01–720.05 erhältlich.
- Zur Bezeichnung von Fittings in korrosionsbeständigen Werkstoffen wird die Artikelnummer des Standard-Fittings mit dem Kurzzeichen des gewählten Einsatzwerkstoffes ergänzt, z.B. 720.1433-HC4.



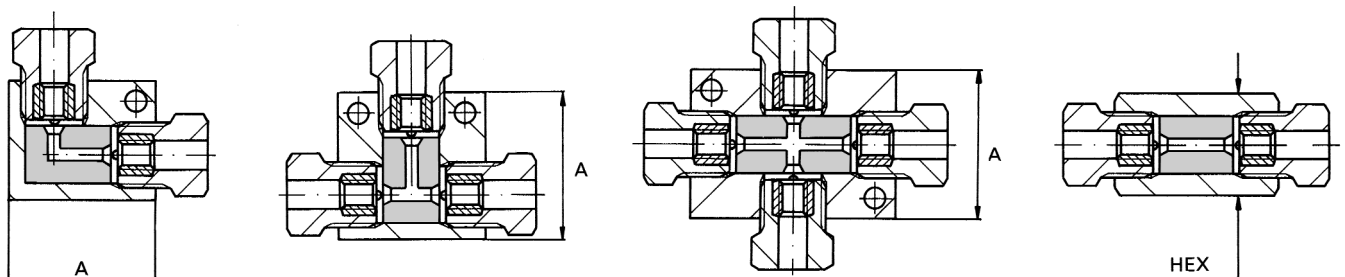
Raccords en matériaux résistants à la corrosion

- Raccords et adaptateurs haute pression avec le noyau en contact avec le fluide en matériaux résistants à la corrosion.
- Avec la construction frettée SITEC l'insert au matériau choisi assure la résistance à la corrosion tandis que le corps externe en Z6 CNDT 17.12 à haute résistance mécanique maintient la pression. Température de service maxi: 200°C.
- Avec cette construction frettée même des matériaux très doux à haute résistance à la corrosion peuvent être appliqués sous hautes pressions.
- Matériaux des inserts de raccords:  
Hastelloy C4 – Hastelloy C276 – Hastelloy C22 – Monel Hastelloy B2 – Titane – Inconel – Nimonic.
- Autres matériaux à la demande.
- Raccords en matériaux résistants à la corrosion selon les pages no. 720.01–720.05 du catalogue haute pression.
- Pour désigner les raccords en matériaux résistants à la corrosion, veuillez ajouter l'abréviation du matériau choisi à la référence du raccord standard, par ex. 720.1433-HC4.

Fittings and Adapters in corrosion resistant materials

- High pressure fittings and adapters with all wetted parts in corrosion resistant materials. Max. working temp.: 200°C.
- With the reliable SITEC double wall design, the insert in the chosen material ensures corrosion resistance and the high-strength body in AISI 316Ti secures the pressure resistance of the unit.
- With this double wall design, relatively soft, but extremely corrosion resistant materials may also be applied with high pressures.
- Available fitting insert materials:  
Hastelloy C4 – Hastelloy C276 – Hastelloy C22 – Monel - Hastelloy B2 – Titanium – Inconel – Nimonic.
- Other materials available on request.
- Fittings in corrosion resistant materials are available according to the catalogue pages no. 720.01–720.05.
- To specify the corrosion resistant fitting, the abbreviation of the chosen material is used as a suffix to the part number of the standard fitting, for example 720.1433-HC4.

Druck Pressure Pression	Rohr Tubing Tube	AØ OD Ø ext.	DN Ø Orifice Pass.	Winkel Elbow Angle	T-Stück Tee Raccord T	Kreuzstück Cross Racc. Croix	Verbinder Union Racc droit.	Art.-Nr. ergänzen mit Add material to part no. Ajouter à la référence		Abmessungen Dimensions Dimensions	
bar	inch	mm	mm	Art.-Nr. Part No. Référence	Art.-Nr. Part No. Référence	Art.-Nr. Part No. Référence	Art.-Nr. Part No. Référence			A mm	HEX mm
1000	9/16	14.3	8	720.1312	720.1313	720.1314	720.1310	-HC4	Hastelloy C4	50 x 30	32
	3/8	9.52	5	720.1322	720.1323	720.1324	720.1320	-HC276	Hastelloy C276	44 x 24	24
2000	3/8	9.52	3	720.1422	720.1423	720.1424	720.1420	-Mo	Monel	44 x 24	24
	1/4	6.35	3	720.1432	720.1433	720.1434	720.1430	-Ti	Titan	36 x 22	24
	1/8	3.20	1.5	720.1402	720.1403	720.1404	720.1400	-etc.		36 x 22	24



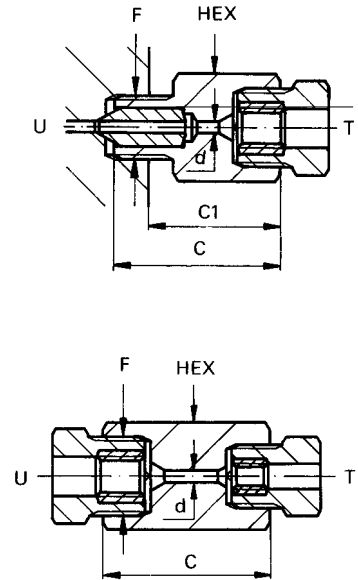
## Reduzierungen – Reducers – Réducteurs

Werkstoff: 1.4571 Material: AISI 316Ti Matériau: Z6 CNDT 17.12

2000 – 7000 bar  
30,000 – 100,000 PSI

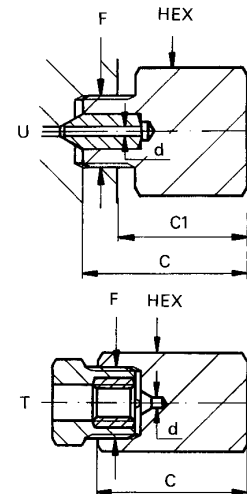
Druck Pressure Pression	HP-Rohrverschraubungen HP Tube Connections Raccordements HP			DN Ø Orif. Pass.	Art.-Nr. Part No. Référence	Abmessungen Dimensions Dimensions				
	U inch mm	F mm	T inch mm			d mm	C mm	C1 mm	HEX mm	
2000	11/16 HP	17.5	M30 x 2	9/16 HP	14.3	8	725.2211	64	47	32
2000	11/16 HP	17.5	M30 x 2	3/8 HP	9.52	5	725.2221-M	64	47	32
2000	11/16 HP	17.5	M30 x 2	1/4 HP	6.35	3	725.2231	64	47	32
2000	9/16 HP	14.3	M26 x 1.5	11/16 HP	17.5	8	725.2121	64	51	41
2000	9/16 HP	14.3	M26 x 1.5	3/8 HP	9.52	5	720.2121-Ø5	45	32	27
4000	9/16 HP	14.3	M26 x 1.5	3/8 HP	9.52	3	720.2121	45	32	27
4000	9/16 HP	14.3	M26 x 1.5	1/4 HP	6.35	3	720.2131	45	32	27
2000	3/8 HP	9.52	M20 x 1.5	11/16 HP	17.5	3	725.2221-F	64	53	41
2000	3/8 HP	9.52	M20 x 1.5	9/16 HP	14.3	5	720.2211-Ø5	46	36	32
4000	3/8 HP	9.52	M20 x 1.5	9/16 HP	14.3	3	720.2211	46	36	32
4000	3/8 HP	9.52	M20 x 1.5	1/4 HP	6.35	3	720.2231	40	30	24
2000	1/4 HP	6.35	M16 x 1.5	11/16 HP	17.5	3	725.2321	64	55	41
4000	1/4 HP	6.35	M16 x 1.5	9/16 HP	14.3	3	720.2311	46	37	32
4000	1/4 HP	6.35	M16 x 1.5	3/8 HP	9.52	3	720.2321	42	33	24
4000	1/4 HP	6.35	M16 x 1.5	1/8 HP	3.20	1.5	720.2301	45	36	24
2000	11/16 HP	17.5	M30 x 2	9/16 HP	14.3	8	725.2210	64		41
2000	11/16 HP	17.5	M30 x 2	3/8 HP	9.52	5	725.2220	64		41
2000	11/16 HP	17.5	M30 x 2	1/4 HP	6.35	3	725.2230	64		41
2000	9/16 HP	14.3	M26 x 1.5	3/8 HP	9.52	5	720.2120-Ø5	46		32
4000	9/16 HP	14.3	M26 x 1.5	3/8 HP	9.52	3	720.2120	46		32
4000	9/16 HP	14.3	M26 x 1.5	1/4 HP	6.35	3	720.2130	46		32
4000	3/8 HP	9.52	M20 x 1.5	1/4 HP	6.35	3	720.2230	42		24
4000	1/4 HP	6.35	M16 x 1.5	1/8 HP	3.20	1.5	720.2300	40		24

## HP – HP



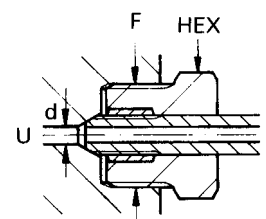
bar	U		F	T		d		C	C1	HEX
	inch	mm		inch	mm					
2000	11/16 HP	17.5	M30 x 2			12	725.2227	64	47	32
2000	9/16 HP	14.3	M26 x 1.5			8	720.2226	50	37	32
4000	9/16 HP	14.3	M26 x 1.5			5	720.2225	50	37	32
4000	3/8 HP	9.52	M20 x 1.5			3	720.2224	48	38	32
4000	3/8 HP	9.52	M20 x 1.5			3	720.2223	42	32	24
7000	1/4 HP	6.35	M16 x 1.5			1.6	720.2222	45	36	32
4000	1/4 HP	6.35	M16 x 1.5			3	720.2221	45	36	32
4000	1/8 HP	3.20	M16 x 1.5			1.5	720.2220	45	36	32
2000			M30 x 2	11/16 HP	17.5	12	725.2117	64		41
4000			M26 x 1.5	9/16 HP	14.3	5	720.2116	52		32
4000			M20 x 1.5	3/8 HP	9.52	3	720.2114	48		27
7000			M16 x 1.5	1/4 HP	6.35	1.6	720.2112	45		27
4000			M16 x 1.5	1/4 HP	6.35	1.6	720.2111	40		24
4000			M16 x 1.5	1/8 HP	3.20	1.5	720.2110	40		24

## Blanks



## Reduzierungsverschraubungen – Reducer connections – Raccords réducteurs

Druck Pressure Pression	HP-Rohrverschraubungen HP Tube Connections Raccordements HP			d max.	SITEC HP Rohr SITEC HP Tube Tube HP SITEC		Art.-Nr. Part No. Référence		Drehm. Torque Couple	
	U inch mm	F			AØ	OD	Ø ext.	Druckschr. Nut/Vis		Druckring Collar
4000	11/16 HP	17.5	M30 x 2	8	9/16	14.3	720.0012	720.0120	32	120
4000	9/16 HP	14.3	M26 x 1.5	5	3/8	9.52	720.0112	720.0220	27	70
7000	3/8 HP	9.52	M20 x 1.5	3	1/4	6.35	720.0212	720.0320	22	40
4000	1/4 HP	6.35	M16 x 1.5	1.5	1/8	3.20	720.0310	720.0322	17	15



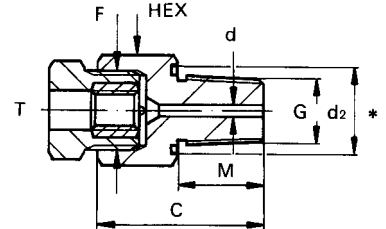
**Übergangsstücke – Adapters – Adaptateurs**

Werkstoff: 1.4571 Material: AISI 316Ti Matériau: Z6 CNDT 17.12

**1000 – 1500 bar  
15,000 – 22,000 PSI**

Druck Pressure Pression bar	HP-Rohrverschraubungen HP Tube Connections Raccordements HP		ND-Anschluss Low Pressure Basse Pression G	DN Ø Orifice Pass. d mm	Art.-Nr. Part No. Référence	Abmessungen Dimensions Dimensions				
	T inch mm	F				C mm	M mm	d <sub>2</sub> mm	HEX mm	
1500	11/16 HP	17.5	M30 x 2	1/2" NPT	8	725.2241	64	16		41
				3/8" NPT	5	725.2251	64	15		41
				1/4" NPT	3	725.2261	64	15		41
1500	9/16 HP	14.3	M26 x 1.5	1/2" NPT	8	720.2141	52	16		32
				3/8" NPT	5	720.2151	46	15		32
				1/4" NPT	3	720.2161	46	15		32
1500	3/8 HP	9.52	M20 x 1.5	1/2" NPT	3	720.2241	48	16		27
				3/8" NPT	3	720.2251	42	15		24
				1/4" NPT	3	720.2261	42	15		24
1500	1/4 HP	6.35	M16 x 1.5	1/2" NPT	3	720.2341	45	16		27
				3/8" NPT	3	720.2351	40	15		24
				1/4" NPT	3	720.2361	40	15		24
1500	11/16 HP	17.5	M30 x 2	R 1/2" BSP/Gaz	8	725.2271	64	14	26	41
				R 3/8" BSP/Gaz	5	725.2281	64	12	21	41
				R 1/4" BSP/Gaz	3	725.2291	64	12	20	41
1500	9/16 HP	14.3	M26 x 1.5	R 1/2" BSP/Gaz	8	720.2171	52	14	26	32
				R 3/8" BSP/Gaz	5	720.2181	46	12	21	32
				R 1/4" BSP/Gaz	3	720.2191	46	12	20	32
1500	3/8 HP	9.52	M20 x 1.5	R 1/2" BSP/Gaz	3	720.2271	48	14	26	32
				R 3/8" BSP/Gaz	3	720.2281	42	12	21	24
				R 1/4" BSP/Gaz	3	720.2291	42	12	20	24
1500	1/4 HP	6.35	M16 x 1.5	R 1/2" BSP/Gaz	3	720.2371	45	14	26	32
				R 3/8" BSP/Gaz	3	720.2381	40	12	21	24
				R 1/4" BSP/Gaz	3	720.2391	40	12	20	24

**HP weiblich – NPT+R(Gas) männl.  
HP female – NPT+BSP male  
HP femelle – NPT+gaz mâle**

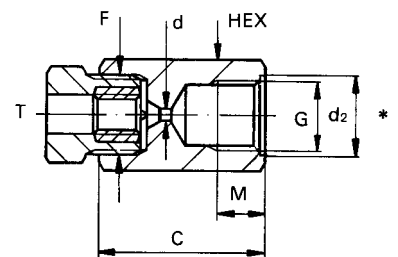


**\*Dichtring – Seal – Joint**

Für R	1/2"	791.26.0014-6
For BSP	3/8"	791.26.0012-6
Pour Gaz	1/4"	791.26.0004-6

Druck Pressure Pression bar	HP-Rohrverschraubungen HP Tube Connections Raccordements HP		ND-Anschluss Low Pressure Basse Pression G	DN Ø Orifice Pass. d mm	Art.-Nr. Part No. Référence	Abmessungen Dimensions Dimensions				
	T inch mm	F				C mm	M mm	d <sub>2</sub> mm	HEX mm	
1500	11/16 HP	17.5	M30 x 2	1/2" NPT	8	725.2240	64	17		41
				3/8" NPT	5	725.2250	64	12		41
				1/4" NPT	3	725.2260	64	12		41
1500	9/16 HP	14.3	M26 x 1.5	1/2" NPT	8	720.2140	52	17		32
				3/8" NPT	5	720.2150	46	12		32
				1/4" NPT	3	720.2160	46	12		32
1000 1500 1500	3/8 HP	9.52	M20 x 1.5	1/2" NPT	3	720.2240	48	17		32
3/8" NPT				3	720.2250	42	12		24	
1/4" NPT				3	720.2260	42	12		24	
1000 1000 1500	1/4 HP	6.35	M16 x 1.5	1/2" NPT	3	720.2340	45	17		32
3/8" NPT				3	720.2350	40	12		24	
1/4" NPT				3	720.2360	40	12		24	
1500	11/16 HP	17.5	M30 x 2	R 1/2" BSP/Gaz	8	725.2270	64	16	26	41
				R 3/8" BSP/Gaz	5	725.2280	64	14	21	41
				R 1/4" BSP/Gaz	3	725.2290	64	14	20	41
1500	9/16 HP	14.3	M26 x 1.5	R 1/2" BSP/Gaz	8	720.2170	52	16	26	32
				R 3/8" BSP/Gaz	5	720.2180	46	14	21	32
				R 1/4" BSP/Gaz	3	720.2190	46	14	20	32
1000 1500 1500	3/8 HP	9.52	M20 x 1.5	R 1/2" BSP/Gaz	3	720.2270	48	16	26	32
R 3/8" BSP/Gaz				3	720.2280	42	14	21	24	
R 1/4" BSP/Gaz				3	720.2290	42	14	20	24	
1000 1000 1500	1/4 HP	6.35	M16 x 1.5	R 1/2" BSP/Gaz	3	720.2370	45	16	26	32
R 3/8" BSP/Gaz				3	720.2380	40	14	21	24	
R 1/4" BSP/Gaz				3	720.2390	40	14	20	24	

**HP weiblich – NPT+R(Gas) weibl.  
HP female – NPT+BSP female  
HP femelle – NPT+gaz femelle**



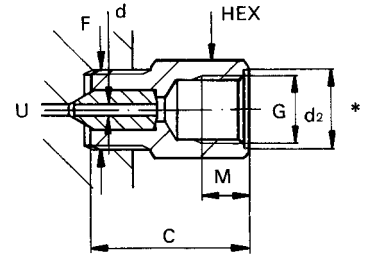
**Übergangsstücke – Adapters – Adaptateurs**

Werkstoff: 1.4571 Material: AISI 316Ti Matériau: Z6 CNDT 17.12

**1000 – 1500 bar  
15,000 – 22,000 PSI**

Druck Pressure Pression	HP-Rohrverschraubungen HP Tube Connections Raccordements HP		ND-Anschluss Low Pressure Basse Pression	DN Ø Orifice Pass.	Art.-Nr. Part No. Référence	Abmessungen Dimensions Dimensions			
	U inch	F mm	G	d mm	C mm	M mm	d <sub>2</sub> mm	HEX mm	
1000 1500 1500	11/16 HP	17.5	M30 x 2	1/2" NPT 3/8" NPT 1/4" NPT	8 5 3	725.2421 725.2521 725.2621	64 64 64	17 12 12	32 32 32
1000 1500 1500	9/16 HP	14.3	M26 x 1.5	1/2" NPT 3/8" NPT 1/4" NPT	8 5 3	720.2411 720.2511 720.2611	50 45 45	17 12 12	32 27 27
1000 1500 1500	3/8 HP	9.52	M20 x 1.5	1/2" NPT 3/8" NPT 1/4" NPT	3 3 3	720.2421 720.2521 720.2621	48 42 42	17 12 12	32 24 24
1000 1000 1500	1/4 HP	6.35	M16 x 1.5	1/2" NPT 3/8" NPT 1/4" NPT	3 3 3	720.2431 720.2531 720.2631	48 42 42	17 12 12	32 24 24
1000 1500 1500	11/16 HP	17.5	M30 x 2	R 1/2" BSP/Gaz R 3/8" BSP/Gaz R 1/4" BSP/Gaz	8 5 3	725.2721 725.2821 725.2921	64 64 64	16 14 14	26 21 20
1000 1500 1500	9/16 HP	14.3	M26 x 1.5	R 1/2" BSP/Gaz R 3/8" BSP/Gaz R 1/4" BSP/Gaz	8 5 3	720.2711 720.2811 720.2911	50 45 45	16 14 14	26 21 20
1000 1500 1500	3/8 HP	9.52	M20 x 1.5	R 1/2" BSP/Gaz R 3/8" BSP/Gaz R 1/4" BSP/Gaz	3 3 3	720.2721 720.2821 720.2921	48 42 42	16 14 14	26 21 24
1000 1000 1500	1/4 HP	6.35	M16 x 1.5	R 1/2" BSP/Gaz R 3/8" BSP/Gaz R 1/4" BSP/Gaz	3 3 3	720.2731 720.2831 720.2931	48 42 42	16 14 14	26 21 24

HP männl. – NPT+R(Gas) weibl.  
HP male – NPT+BSP female  
HP mâle – NPT+gaz femelle

**\*Dichtring – Seal – Joint**

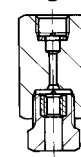
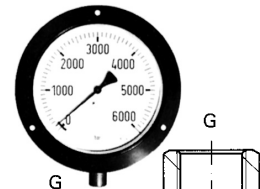
Für R	1/2"	791.26.0014-6
For BSP	3/8"	791.26.0012-6
Pour Gaz	1/4"	791.26.0004-6

**Anschlussstücke – Connectors – Raccords**

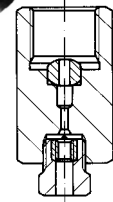
Werkstoff: 1.4571 Material: AISI 316Ti Matériau: Z6 CNDT 17.12

**max. 7 000 bar  
max. 100,000 PSI****Manometeranschlüsse – Gauge Connectors – Raccords de manomètre**

Druck Pressure Pression	G	HP-Anschluss		HP Tube Connection	Raccord HP
		1/4 HP 6.35 mm M16 x 1.5	3/8 HP 9.52 mm M20 x 1.5	9/16 HP 14.35 mm M26 x 1.5	
2500 bar	R 1/4" BSP/Gaz	720.3131			720.3411
	R 3/8" BSP/Gaz	720.3432			
	R 1/2" BSP/Gaz	720.3433	720.3423		720.3413
4000 bar	R 3/4" BSP/Gaz	720.3634	720.3624		
7000 bar	R 1" BSP/Gaz	720.3835	720.3825		



max. 2500 bar



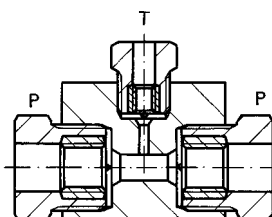
4000-7000 bar

**Gasflaschenanschlüsse – Gas Bottle Connectors – Raccords bouteilles gaz**

CO <sub>2</sub> , He, Ar	W21,8 – 14 RH	1/4 HP – M16 x 1.5	729.9131
N <sub>2</sub> , etc.	W24,3 – 14 RH	1/4 HP – M16 x 1.5	729.9132
Methan, H <sub>2</sub>	W21,8 – 14 LH	1/4 HP – M16 x 1.5	729.9133
O <sub>2</sub>	R 3/4" BSP/Gaz RH	1/4 HP – M16 x 1.5	729.9134

**Messanschlüsse für Manometer und Druckaufnehmer****Connections for gauges and pressure transducers****Raccords pour manomètres et capteurs de pression**

Druck Pressure Pression	HP-Verschraubung HP Connections Raccordements HP		Art.-Nr. Part No. Référence
	P	T	
2000	11/16 HP	1/4 HP	727.4340-d12/3
2000	9/16 HP	3/8 HP	727.1210-d8/5
4000	9/16 HP	3/8 HP	727.1210-d5/3
2000	9/16 HP	1/4 HP	727.1310-d8/3
4000	9/16 HP	1/4 HP	727.1310-d5/3
2000	3/8 HP	1/4 HP	727.2320-d5/3



P	G	Art.-Nr. Part No. Référence
3/8 HP	R 1/2" BSP/G	727.2720
3/8 HP	R 1/4" BSP/G	727.2920
1/4 HP	R 1/2" BSP/G	727.3730
1/4 HP	R 3/8" BSP/G	727.3830
1/4 HP	R 1/4" BSP/G	727.3930

